

Good relationships between the centre and its community gives your children a greater chance of success.

It is only natural that from time to time parents have concerns about what happens at Preschool or Rural Care.

Your concerns may relate to either staff performance or Preschool and Rural Care policies.

Should this happen, it is important to know the correct way to have your concerns acted upon.

At Peterborough Community

Preschool and Rural Care

Services we have a process which allows this to happen.

PETERBOROUGH COMMUNITY PRESCHOOL AND RURAL CARE SERVICES CARE TEAM

**PRESCHOOL DIRECTOR:
Kerry Thomas**

You are welcome to
contact us at any time.

Phone: 08 8651 2550

Fax: 08 8651 3456

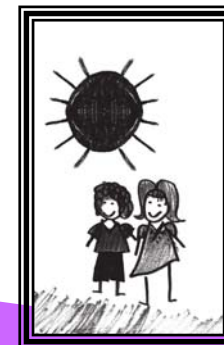
E-mail:

dl.6649.leaders@schools.sa.edu.au

PETERBOROUGH
COMMUNITY
PRESCHOOL AND
RURAL CARE
SERVICES CARE
TEAM



PARENT/
COMMUNITY
GRIEVANCE POLICY



PARENT CONCERN WITH PRESCHOOL

POLICY



AT A MUTALLY CONVENIENT TIME DISCUSS THE CONCERN WITH A GOVERNING COUNCILLOR (AND ASK IT TO BE PLACED ON THE AGENDA FOR NEXT MEETING

MEETING

OR PHONE FOR AN APPOINTMENT TO MEET WITH THE PRESCHOOL DIRECTOR TO DISCUSS YOUR CONCERNS

DISCUSS YOUR CONCERNS



RESOLVED

NOT RESOLVED



CONTACT THE YORKE & MID NORTH REGIONAL OFFICE ON 86320600 TO DISCUSS THE CONCERN.

PARENT CONCERN WITH PRESCHOOL

DIRECTOR PERFORMANCE



PHONE FOR AN APPOINTMENT TO MEET WITH THE PRESCHOOL DIRECTOR TO DISCUSS YOUR CONCERN

DISCUSS YOUR CONCERN



RESOLVED



NOT RESOLVED



CONTACT THE YORKE & MID NORTH REGIONAL OFFICE 86320600 AND MAKE A TIME TO DISCUSS THE CONCERN.



PARENT CONCERN WITH EARLY

CHILDHOOD/RURAL CARE WORKER PERFORMANCE



PHONE FOR AN APPOINTMENT TO MEET WITH THE ECW OR RCW TO DISCUSS YOUR CONCERN



RESOLVED



NOT RESOLVED



PHONE FOR AN APPOINTMENT TO MEET WITH THE PRESCHOOL DIRECTOR OR NOMINEE TO DISCUSS YOUR CONCERN. THE PRESCHOOL DIRECTOR WILL INVESTIGATE THE ISSUE AS PART OF THEIR SUPERVISORY ROLE AND MAY ARRANGE A FURTHER MEETING WITH YOU AND THE STAFF.



RESOLVED



NOT RESOLVED



CONTACT THE YORKE & MID NORTH REGIONAL OFFICE 86320600 AND MAKE A TIME TO DISCUSS THE CONCERN.